

## Alum Project is Underway

On March 31, the first of seven tanker loads of alum were applied to the deep areas within Bear Lake and was completed on April 4th. Property owners responded to the call for aiding lake water quality by making a financial investment in the important resource. A donations drive was initiated in February to fund the costs of the project to help protect water quality of the lakes and interdict further decline. The experts who were consulted made analysis of Bear Lake and recommended the application of 22 tanker loads of alum be applied in the deeper areas where sediment levels are highest.

All donations dedicated to the alum project totaled \$62,185 through April 6th. The funding was initiated with \$5,000 voted by the BLPA Board to hire experts to test sediment samples and determine the application parameters. The balance of the dedicated funds came from property owners who have a desire and invested interest in

lake quality. Bear Lake has 178 property lakefront owners (including some absentee owners). Donors totaled 84 of which four were deeded access (not lakefront) and one on Little Bear. The recommended donation for lakefront owners was \$1,000. The average donation is \$740. Of the 178 property owners on Big Bear, 44% participated as of April 6th.

The first goal was to apply 10 tanker loads. The funds available supported purchase of seven rather than the full 10. Therefore the need for additional funding remains. It is time for a larger response from property owners to make the commitment along with the 44% already involved.

The next General Meeting of BLPA is to be held on May 13th. Please attend for more update and general lake information.

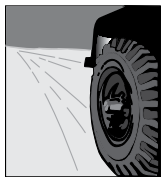


*"It's been months since I walked down to our shoreline and to the edge of our dock. I stayed away, as looking into the water was always so disheartening to me. But after I heard BLPA placed alum into Bear Lake with monies from neighbors, I couldn't wait to see the results!*

*I walked down not getting my hopes up too high...and wow! I saw white sand for the first time in a VERY long time and could even see the bottom of the lake from my dock! I hope we can apply more alum to Bear Lake and perhaps one day have our lake looking as clean as it was 20 years ago. Thank you BLPA!" — Janice Maki*



[www.blpa.net](http://www.blpa.net)  
SEE BOB'S VIDEO  
ON THE ALUM  
PROJECT



# Bear Lake Road Drainage Improvement Project Update

By Brett Blackadar

The underground utilities (water main and sanitary sewer relocation) that need to be relocated in order for the new storm sewer lines to be installed have all been completed. We are currently awaiting the final approvals to these lines from the FDEP and once that has been achieved we will begin the complete installation of the new storm drain at both the north and south ends of Bear Lake Road. We are hopeful that will occur in the upcoming weeks.

In the meantime, we are currently working on the new storm drain being installed in the general area of Mirror Lake Drive, which is not contingent on utility relocation for it to be installed. This work consists of new storm drain and underdrain to improve the drainage in these areas. We have also begun the removal and reconstruction of the sidewalk and curb and gutter at the south end of the project (Bear Lake Circle to Jessica Drive) on the west side of the road. We have finished with the work at the pond on the northeast side of Bunnell Road and Bear Lake Road, and are mostly done with the storm drain work at the ditchline on the east side of Bear Lake Road, directly across from Bear Lake Circle.

Once all of the water lines and sanitary sewer lines have been approved by FDEP the new storm drain installation will proceed from the area at Bear Lake Circle to the south, mostly on the east side of the road. There will be a brief period in the upcoming weeks where the work at the intersection of Bear Lake Circle and Bear Lake Road will be extensive, and will either cause the intersection to be closed for part or all of a weekend, or in the alternative,

traffic may have to be flagged or one directional for a week or so. Which of these maintenance of traffic methods will be used for this area is currently being weighed, and we will try to choose the option that will cause the least disruption to the residents.

All new curb and sidewalk work at the south end/east side will occur behind the storm drain construction.

At the north end of Bear Lake Road between W. Lina Lane and Lake View Drive will be reconstructed with new base and asphalt following the installation of the new storm drain. New sidewalk and curb and gutter will be constructed at the north end as well during this time.

Once this storm drain work and new road construction has been completed at the north and south ends of the project (hopefully by early- to mid-summer) the detours will be removed. The project will wrap up with the milling of the old asphalt and placement of the new asphalt from just north of Maitland Blvd. to just south of Bunnell Rd. and from just south of McNeil Road to about 500' north of Gleaves Court. Traffic will be maintained with flagmen during work operations and completely opened to traffic in the evenings during this phase of the work. The project will be completed for the most part following the permanent striping of the new asphalt and the installation of new traffic signs throughout the project.

You are encouraged to contact the Construction Field Inspector Tom Kline with any questions or concerns you may have. You may contact him at 407-947-5920.

***Which of these maintenance of traffic methods will be used for this area is currently being weighed, and we will try to choose the option that will cause the least disruption to the residents.***



## 2008 Board of Directors

### Officers

President.....	Brian Allen 407-580-6979
Vice President .....	Bill Houston 407-721-0219
Secretary .....	Corrie Hungerford 407-947-2901
Treasurer .....	Michelle Haynes 407-682-2578

### Committees

Ecology .....	Bill Houston 407-721-0219
Lakewatch.....	Nancy Dunn 407-295-6335 Jan Brown 407-295-6739 Margaret Bundy 407-523-1064
Membership.....	Anne Juergensen 407-925-5123 Janice Maki 407-774-1128 Susan Burton 407-521-8212 Judy Ihrig 407-292-4632
Newsletter .....	Michelle Haynes 407-682-2578
Social .....	Judy Ihrig 407-292-4632
Political .....	Jim Maki 407-774-1128 Ned Woolfolk 407-292-5128 Mark Levitt 407-682-2578

### Directors

Judy Ihrig.....	407-292-4632
Bob Shields.....	407-294-9093
Buddy Hutson .....	407-298-3681
Shirley Haynes.....	614-565-1819

### Board Supporters

Patsy Cumbie .....	407-886-5588
Susan Burton .....	407-521-8212
Erma Cardilli.....	407-293-5227
Mike Kafer .....	407-298-5865
Anne Juergensen.....	407-925-5123
Ned Woolfolk .....	407-292-5128
Dick Dominica.....	407-522-4402
Jan Brown .....	407-295-6739
Vicki Jameson .....	407-822-4202
Sue Parker .....	407-294-6026
Margaret Bundy .....	407-523-1064
Walt Juergensen .....	407-299-7147
Janice & Jim Maki .....	407-774-1128

# "Yes Sir, I'm Going South!"

By Edith Finney (This is part one of a two-part article which will conclude in the next issue.)

That was the name of a popular song in 1924 when my father decided we would travel to Florida. We lived in New England and Florida was a long way off then. Travel in the south or west was pretty primitive and we felt like real pioneers. The network of route numbers was not in existence then. We found our way by the Blue Book, which gave directions like this "You drive down \_\_\_\_\_ Street five miles and turn right at green house." By the time you made the trip the house had probably been painted brown! After leaving Pennsylvania there were no paved roads except in North Carolina. Florida did have one track of brick on the main highways and when we met a car we had to let two wheels off the road to pass. It was always difficult to get the wheels back on the road because the sand wore away from the curbing and we had to drive a while and look for an even place to get back on. The other southern states had only winding, clay roads that were dusty and washboardy in dry weather and slippery bog in wet weather.

There were no hotels along the road in those days. The tourist camps with little cottages and community restrooms came later. We could never be sure we could make it to a town with a hotel so we brought camping equipment. We brought a tent that fastened to one side of the car and camp cots. We had a gasoline stove and a roll up table. The tourist camps that we stopped at were just a field that a farmer made into a camp. It had plenty of room for tents and a couple restrooms. Some didn't even have running water. A luxurious one would have set tubs where one could wash out a few things. We even stopped at one that had no restrooms, only the woods. Folks couldn't be fussy and drive down the road looking for better accommodations for they could be miles away. Since we only travelled about 125 miles a day and towns were pretty far apart.

Our first night out we were in a small town in Pennsylvania and the



only place we could find to camp was a church yard. We had permission of course. It was pretty cold. In fact we were pretty cold every night until we were down into central Georgia. This was in October. We kept thinking that as we got further south it would get a little warmer but it never did.

It took us 10 days to go from Connecticut to Central Florida. We did stop in Washington, D.C., a couple of days to sightsee. And we had to stay a couple of days in Macon, Georgia, because of rain.

When it rained, the roads were so slippery they were almost impassable. With the high crown they had then, one could hardly keep from sliding into the ditch. The type of roads and the kind of cars made 100 miles quite a trip. Our Model T Ford wouldn't go over 40 mph, 25 to 30 mph was the average speeds for those roads. We thought our car was pretty fancy, having windows that we could roll up and down, instead of the open car with side curtains we had before. We had silk window shades in the back and vases at the side of each door for flowers! Tires were a problem and could slow up any trip because we couldn't go far without punctures. It was a common sight to see folks here and then stopped to fix a tire. They had to know how to repair the hole themselves and everyone had a tire kit which included tire patches and a hand pump.

Gas stations were few and far

between. Another reason for getting such poor mileage was camping. We had to stop early enough to pitch a tent before the dew formed on the ground and it took time in the morning to put it all back again. We packed it all on the running board along with a little cupboard where we kept provisions for meals. Cars had no trunk space. We had a little metal holder that could be pulled out like an accordion to fit on the running board to hold everything.

We must have traveled about the same distance as everyone else going south because we often met the same folks two nights in a row. We were all from the north going to a new country and wondering what we were going to find. Groups were small and friendly and after supper, folks were gather and talk about "back home" in Indiana, or Ohio, or New York. Some folks had heard that there was a boom starting in Florida, I don't think we had as I had never heard anything about a boom until we got to Florida. We weren't going to seek our fortune, just to see what it was like having heard all about it from relatives who had been going down there for years. We had to "sit out" a couple of days of rain in Georgia. Those people who were too impatient to wait set out but soon returned, after being pulled out of the mud by several farmers.

Part 2 will be included in the next issue of the BLPA newsletter.

# BLPA Election Results

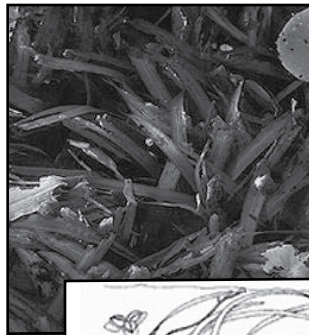
Per the official ballot results of the membership meeting the following persons were elected to the board of directors and agreed to serve:

- Brian Allen
- Bill Houston
- Corrie Hungerford
- Judy Ihrig
- Bob Shields
- Buddy Hutson
- Michelle Haynes
- Shirley Haynes

Officers were elected as follows:

- President - Brian Allen
- Vice President - Bill Houston
- Secretary - Corrie Hungerford
- Treasurer - Michelle Haynes

# Bear Lake Has Eel Grass Growing! (Vallisneria)



We may soon experience problems with mats of filamentous algae and floating eel grass which have occurred in area lakes such as Lake's Killarney and Lake Osceola in Winter Park.

Eel grass is a native plant that occurs in most of our larger lakes in Central Florida. This plant can occasionally become uprooted and float to a new location in the lake, resulting in the formation of large mats. Boat traffic can cut eel grass, especially when water levels are low, adding to the mass of plants floating in the lake. As the broken pieces of eel grass break down, they release nutrients into the surrounding water. Filamentous algae often utilize these nutrients and can form large, unsightly mats within or adjacent to the eel grass mats. You can see these mats floating around Bear Lake and mostly in

the canal where the water is often stagnant. The mats move from one side of the lake to the other, depending on the wind direction.

On Lakes Killarney and Osceola, Lakes Division staff for the City of Winter Park used an airboat with a rake attachment to remove hundreds of cubic yards of floating plant material from these two lakes before the condition was brought under control.



## Real Estate Watch

By Susan Burton, Realtor®

Call me if you have any questions (407-682-1214). There have been no closed sales since the last newsletter. What a great time to have so many choices of prime lakefront properties.

### Active Listings

6007 Linneal Beach Dr .....	\$699,900
6013 Linneal Beach Dr .....	\$925,000
6259 Linneal Beach Dr .....	\$1,300,000
6165 Linneal Beach Dr .....	\$1,392,000
1600 Bear Lake Rd .....	\$729,000
9616 Bear Lake Rd .....	\$750,000
9410 Bear Lake Rd .....	\$998,900
5802 Bear Lake Cir .....	\$659,000
6500 Bear Lake Cir .....	\$649,000
1411 Balmy Beach Dr .....	\$3,999,999
3304 Holiday Ave .....	\$825,000



**Mobile Marine Service**  
407 474-4225

**Jeff Belford**

Phone 407-474-4225  
mobilemarinesvc@hotmail.com

1630 N. Singleton Avenue  
Titusville, FL 32796

# Information on Lakewatch... Rainfall Data

*Rainfall Versus Water Clarity*

The following Lakewatch data covers the last 10 months. Clarity level is the average of four locations on Big Bear Lake and three locations on Little Bear Lake and Cub Lake. Lake levels determined by surveyed elevation markers set on the lakes by Seminole County.

Conversion from the National Geodetic Vertical Datum of 1929 (NGVD29) to the North American Vertical Datum of 1988 (NAVD88) was completed in Seminole county February 19, 2007.

The conversion factor is  $-1.031$ . The Bear Lakes' gauges were re-surveyed by the County in February 2007.

**Although Bear Lake is at 13' water clarity this month, the water is very "green" compared to 10 years ago and algae in the lake recede with cooler temperatures.**

## Bear Lake

Date	Rainfall	Clarity Level	Water Level (Above Sea Level)
7/07	9-3/8"	7-1/2'	102.5
8/07	4-3/4"	8'	102.5
9/07	11-9/8"	8'	103-1/2
10/07	6-1/2"	7-1/2'	103.3
11/07	2"	8'	103.2
12/07	1-1/2"	10'	103.1-1/2
1/08	6"	9'	103.4
2/08	1-3/8"	13'	103.4
3/08	5-1/4"	12'	103.4-1/2
4/08	4-5/8"	13'	103.6-1/2

## Little Bear Lake

Date	Rainfall	Clarity Level	Water Level (Above Sea Level)
7/07	9-3/8"	5'	103.43
8/07	4-3/4"	5'	103.24
9/07	11-9/8"	5'	103.8
10/07	6-1/2"	5'	103.83
11/07	2"	4-1/2'	103.7
12/07	1-1/2"	5-1/2'	103.7
1/08	6"	—	—
2/08	1-3/8"	10'	103.8
3/08	5-1/4"	7-1/2'	103.8
4/08	4-5/8"	not reported	not reported

## Cub Lake

Date	Rainfall	Clarity Level	Water Level (Above Sea Level)
7/07	9-3/8"	11'	100.1
8/07	4-3/4"	10'	100.1
9/07	11-9/8"	9'	101.8
10/07	6-1/2"	10'	100.1
11/07	2"	10'	100.1
12/07	1-1/2"	9'	100.2
1/08	6"	10'	100.3
2/08	1-3/8"	—	—
3/08	5-1/4"	11'	100.65
4/08	4-5/8"	not reported	not reported

# Abel Septic Tanks, Inc.

Since 1961

Dennis. D. Abel

Master Septic Tank Contractor

407-889-2704 • 407-509-4611 (mobile)

Email: [dabel79935@aol.com](mailto:dabel79935@aol.com)

Website: [www.abelseptic.com](http://www.abelseptic.com)

Old Roman Restaurant



COLOSSEUM IN ROMA  
Since 1984

## ROMA RISTORANTE ITALIANO

*"If you want Genuine, Home-made Italian Food,  
You can fly to Italy or drive to Roma."*

(407) 886-2360

730 Orange Blossom Trail  
Apopka, Florida

LUNCH 11:30 - 2:00

Tues. - Friday

DINNER 4:30 - 10:00

Tues. - Saturday

SUSAN A. BURTON, P.A.  
Relocation Specialist, REALTOR®  
(407) 682-1214 BUSINESS  
(407) 682-6269 FAX  
(800) 669-5565 TOLL FREE  
(407) 521-8212 EVENING  
[saburton@bellsouth.net](mailto:saburton@bellsouth.net)



RESIDENTIAL REAL ESTATE, INC.  
2160 West Highway 434, Suite 100  
Longwood, FL 32779



Owned And Operated  
By NRT Incorporated.



## Share Your Fishing Pictures in Our Newsletter!



Kenny Van Bevan shows his first fish at 2-1/2 years old to mom, Suzy Bevan



Luc Lombardo, 5 years old, with great-grandmother Katy Daniell, smiles at the camera.

## St. Andrews Presbyterian Church

9913 Bear Lake Road • Apopka, FL

407-293-6802 • Worship: 10:00 am

Holy Grounds Contemporary Service: 9:30 - 10:00 am



Your family doctor bringing  
back the "House Call".

### At Your Home M.D.

BRIAN SCOTT ALLEN, M.D.

DIPLOMATE, AMERICAN BOARD OF FAMILY MEDICINE  
CERTIFIED, AMERICAN ASSOCIATION OF MEDICAL REVIEW OFFICERS

407.580.6979

[yourhomemd@bellsouth.net](mailto:yourhomemd@bellsouth.net)

[www.atyourhomemd.medem.com](http://www.atyourhomemd.medem.com)

# The BLPA Wants YOU!

The BLPA is committed to preserving the lakes and community to protect our lifestyle and property values. The BLPA invites you to join our organization. Be Aware! Get Involved!

Look at the membership advantages the organization provides:

- Free BLPA license tag.
- Lake preserving activities and ideas for residents.
- "Watchdog" challenges to encroachment by developers and government.
- Neighborhood social activities (picnics, block parties, boat parade, etc.)
- Monthly Lakewatch testing and analysis.
- Expert speakers on environmental topics such as lake management and water quality.
- Coordination of Neighborhood Watch communities.
- Town Hall forums for homeowners to express pros and cons of neighborhood projects.
- Liaison with the county on issues such as traffic, lake patrols, and water run-off problems.
- Other activity suggestions welcomed by members.
- Annual community picnic.

Please add your voice and financial support by joining this community enhancement group.

---

New/Renewal Member • Bear Lake Preservation Association, Inc.  
c/o Michelle Haynes, 1316 Palm Drive, Apopka, FL 32703

Name(s) of Home Owner(s): \_\_\_\_\_

Street Address: \_\_\_\_\_

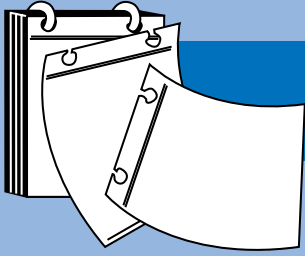
City/St/Zip: \_\_\_\_\_

Telephone: \_\_\_\_\_

Email: \_\_\_\_\_

Please mail this form to the above address with your check for \$75.00; senior citizens, \$35.00. Please make your checks payable to Bear Lake Preservation Association, Inc.

**GET INVOLVED AND DO YOUR PART! WE CAN'T DO IT WITHOUT YOU!**



# MARK YOUR CALENDAR!

## BLPA May General Meeting

*May 13, 2008 • 7:30 p.m.*

*St. Andrews Presbyterian Church*



**Guest Speaker:**  
**Seminole County Commissioner**  
**Dick Van Der Weide**

## BLPA Special Alum Fund It's Not Too Late to Donate!

**Show your support by donating to the BLPA Alum Fund...your lake depends on it!**

- |                                 |   |
|---------------------------------|---|
| <input type="checkbox"/> \$1000 | <input type="checkbox"/> \$400          |
| <input type="checkbox"/> \$600  | <input type="checkbox"/> \$200          |
|                                 | <input type="checkbox"/> Other \$ _____ |

Name: \_\_\_\_\_

Address: \_\_\_\_\_

City/St/Zip: \_\_\_\_\_

Please send in this form with your check, payable to BLPA Alum Project, c/o Michelle Haynes, 1316 Palm Drive, Apopka, FL 32703.



c/o Michelle Haynes  
1316 Palm Drive  
Apopka, FL 32703